

JUST THINK • COULD IT
• BE SEPSIS?



**SEPSIS ONSET CAN BE RAPID.
IT'S CRUCIAL TO ACT QUICKLY.**

**LIFE-SAVING
INTERVENTIONS INCLUDE:**



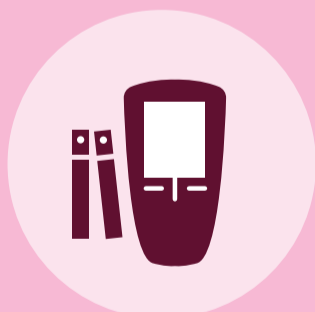
Taking blood cultures



Administering intravenous antibiotics



Commencing fluid resuscitation



Taking a lactate



Escalating to a senior clinical decision maker



Monitoring patients closely for signs of further deterioration