



On the Radar

Issue 664
2 September 2024

On the Radar is a summary of some of the recent publications in the areas of safety and quality in health care. Inclusion in this document is not an endorsement or recommendation of any publication or provider. Access to particular documents may depend on whether they are Open Access or not, and/or your individual or institutional access to subscription sites/services. Material that may require subscription is included as it is considered relevant.

On the Radar is available online, via email or as a PDF or Word document from <https://www.safetyandquality.gov.au/newsroom/subscribe-news/radar>

If you would like to receive *On the Radar* via email, you can subscribe on our website <https://www.safetyandquality.gov.au/newsroom/subscribe-news> or by emailing us at mail@safetyandquality.gov.au. You can also send feedback and comments to mail@safetyandquality.gov.au.

For information about the Commission and its programs and publications, please visit <https://www.safetyandquality.gov.au>

On the Radar

Editor: Dr Niall Johnson, Amy Forsyth, Kass Adams



NATIONAL MEDICINES SYMPOSIUM 2024

NOVEMBER

19

National Medicines Symposium 2024

Join the conversation on medicines in an ageing population.

Registrations are now open for the *National Medicines Symposium 2024*. This year's event will focus on the safe and appropriate use of medicines in an ageing population.

Theme: Ageing Well: safe medicines, better lives

Date: Tuesday, 19 November

Time: 10.00am – 3.00pm

Format: Virtual

Key highlights

- Understand the challenges and opportunities for medication management in an ageing population.
- Learn best practice approaches to safely deprescribe high-risk medicines and reduce medication-related harm in older Australians.
- Discover innovative digital health tools that can help in managing medicines safely and effectively.

Keynote speakers:

- Professor Libby Roughead, Director of the Quality Use of Medicines and Pharmacy Research Centre, University of South Australia
- Professor Jennifer Martin, President & Board Chair, The Royal Australasian College of Physicians
- Professor Sarah Hilmer, Conjoint Professor of Geriatric Pharmacology, Faculty of Medicine and Health, University of Sydney
- Dr Lisa Kouladjian O'Donnell, Lecturer, Faculty of Medicine and Health, The University of Sydney and Deputy Chair, Australian Deprescribing Network (ADeN)
- More to come!

Don't miss this opportunity to participate in a thought-leading dialogue about medication management strategies that can improve patient health outcomes – register now AT

<https://safetyandquality.tv/national-medicines-symposium-2024/>

For more information visit <https://www.safetyandquality.gov.au/NMS24> or email NMS@safetyandquality.gov.au

Australian Framework for National Clinical Quality Registries 2024

Australian Commission on Safety and Quality in Health Care

Sydney: ACSQHC; 2024. p. 66.

<https://www.safetyandquality.gov.au/our-work/indicators-measurement-and-reporting/national-guidance-clinical-quality-registries>

Australia's national clinical quality registries (CQRs) play a unique and vital role in Australia's health system, contributing to ongoing improvements in the safety and quality of care.

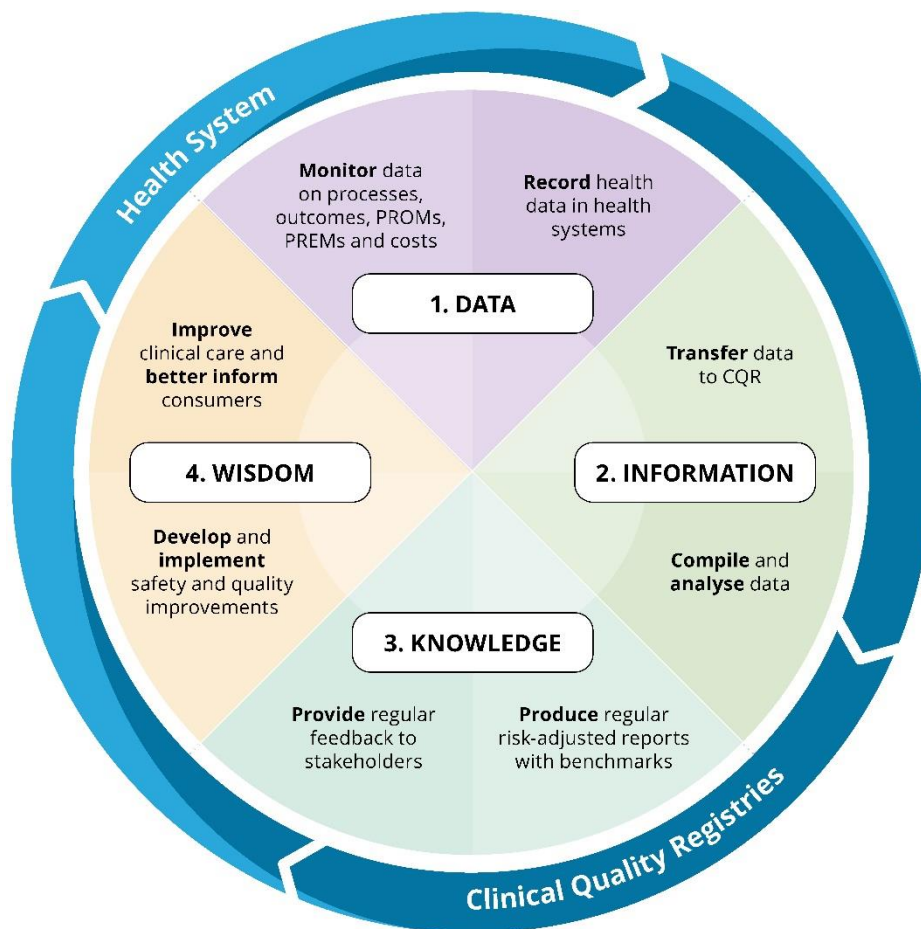
The Commission has released the revised *Australian Framework for National Clinical Quality Registries* (2024) to support and encourage the use of data to inform clinical practice and policy. The Framework supports CQRs in collecting, analysing, and reporting clinical data, to maximise the value of Australia's clinical data. It aligns with the Australian Government's [National Strategy for Clinical Quality Registries and Virtual Registries 2020–2030](#), ultimately leading to better patient outcomes across Australia.

What's new about the Framework:

- Emphasises the role CQRs play in driving improvements across the health system
- Practical guidance on CQR governance
- Quality Standard for CQRs and self-assessment checklists

To download a copy of the Framework and supporting documents see

<https://www.safetyandquality.gov.au/our-work/indicators-measurement-and-reporting/national-guidance-clinical-quality-registries>



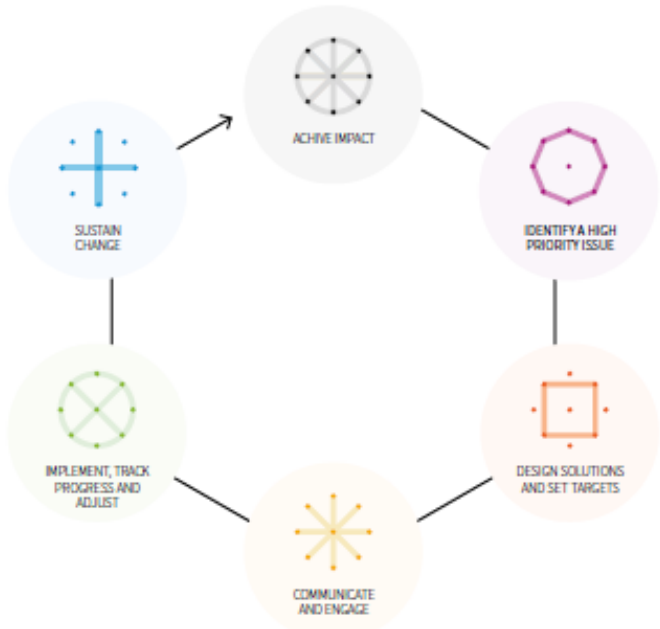
CQR feedback loop for ongoing improvements in the safety and quality of healthcare

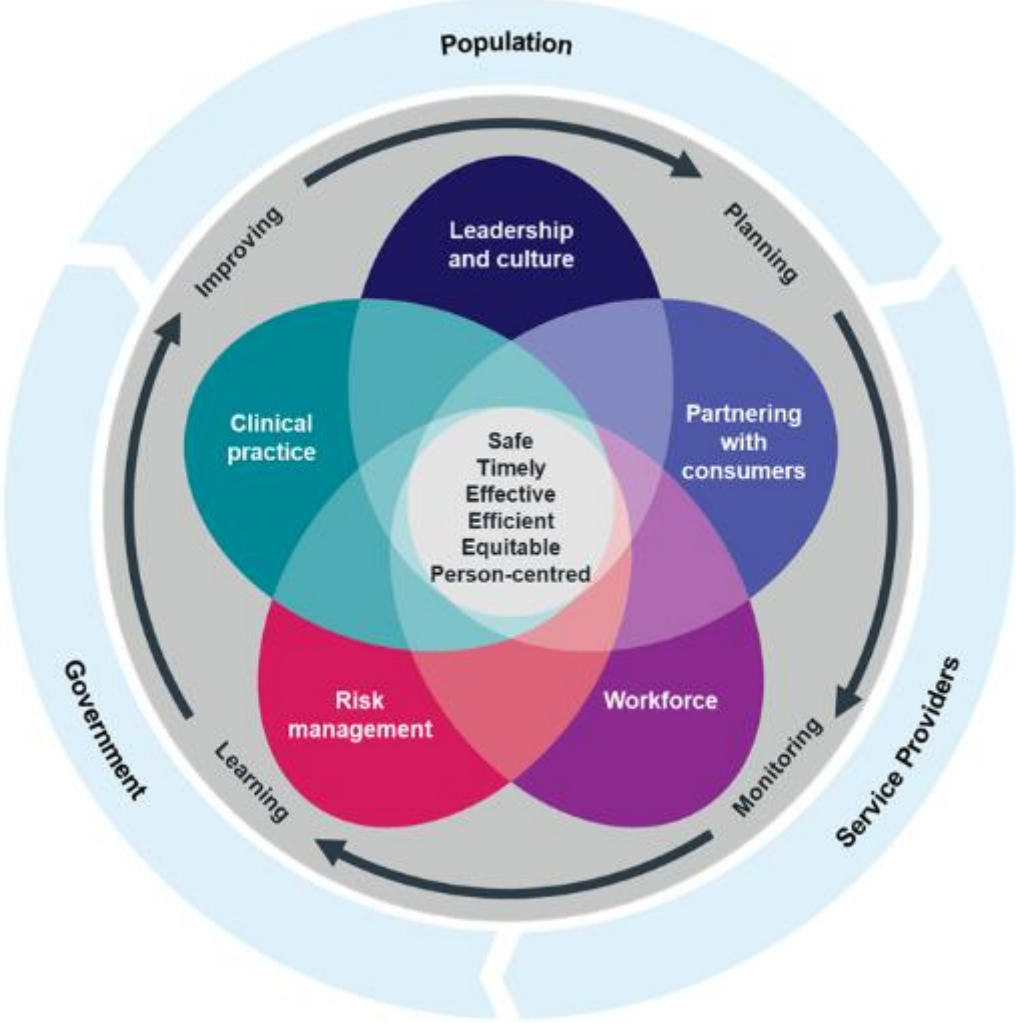
Reports

Implementation playbook: delivering impact for health

World Health Organization

Geneva: WHO; 2024. p. 158.

URL	https://www.who.int/publications/i/item/9789240085190
Notes	<p>The World Health Organization (WHO) has produced this resource to ‘respond to the needs of a broad audience of health systems leaders and “change-makers” at all levels.’ The WHO suggests that ‘the Implementation Playbook can be used by anyone aiming to improve their implementation capacity and how they connect their day-to-day efforts with achieving impact.’ The resource includes sections:</p> <ol style="list-style-type: none"> 1. Identify a high priority issue 2. Communicate and engage 3. Design solutions and set targets 4. Implement, track progress and adjust 5. Sustain change. <p>Figure 1: Impact cycle; Source: adapted from the ‘Evidence Ecosystem for Impact Framework’ In Evidence, policy, Impact: WHO guide for evidence-informed decision-making (2021).</p>  <pre> graph TD A((ACHIEVE IMPACT)) --- B((IDENTIFY A HIGH PRIORITY ISSUE)) B --- C((DESIGN SOLUTIONS AND SET TARGETS)) C --- D((COMMUNICATE AND ENGAGE)) D --- E((IMPLEMENT, TRACK PROGRESS AND ADJUST)) E --- F((SUSTAIN CHANGE)) F --> A </pre>

URL	https://www.safercare.vic.gov.au/reports-and-publications/victorian-clinical-governance-framework
Notes	<p>Safer Care Victoria has published their revised <i>Victorian Clinical Governance Framework</i>. The Framework is intended to aid health services to:</p> <ul style="list-style-type: none"> • understand the clinical governance roles and responsibilities within the health service • evaluate their clinical governance systems, processes, and reporting mechanisms • establish a strong safety culture that puts consumers at the centre of all decision making • ensure individual and collective accountability for high quality and safe care. 

Journal articles

Person-centred decisions in emergency care for older people living with frailty: principles and practice
 van Oppen JD, Coats T, Conroy S, Hayden S, Heeren P, Hullick C, et al
 Emergency Medicine Journal. 2024;emermed-2024-213898.

DOI	https://doi.org/10.1136/emermed-2024-213898
Notes	Care that is centred upon the individual in which that person is empowered to make decisions about that care is sometimes seen as the ideal. However, in some contexts this may be difficult to achieve. This piece examines a setting and a patient population where this can be challenging: older people living with frailty requiring emergency care. The authors note that ‘Typical evidence-based guidelines and protocols provide guidance for the management of single and simple acute issues.’ There have been calls for guidance that accounts for the prevalence of chronic conditions and multimorbidity. Here the authors also note that person-centred care ‘orientates interventions around the perspectives of the individual’ and that there can be a tension between these approaches, that ‘may trigger inappropriate clinical processes or place undue onus on patients and families’. The piece then seeks to ‘advocate for delivering a combined evidence-based, person-centred approach to healthcare which considers the person’s situation and values, apparent problem and available options.’

For information on the Commission’s work on person-centred care see
<https://www.safetyandquality.gov.au/our-work/partnering-consumers/person-centred-care>

Developing a process to measure actual harm from medication errors in paediatric inpatients: From design to implementation

Mumford V, Raban MZ, Li L, Fitzpatrick E, Woods A, Merchant A, et al
 British Journal of Clinical Pharmacology. 2024;90(7):1615-1626.

DOI	https://doi.org/10.1111/bcp.16052
Notes	Paper reporting on an Australian study that sought to ‘design and implement a new process to assess actual harm resulting from medication errors in paediatric inpatient care.’ The project identified prescribing errors through retrospective medical record reviews (26 369 orders) and medication administration errors through direct observation (5137 administrations). Multidisciplinary harm panels then ‘reviewed 566 case studies (173 prescribing related and 393 administration related) and found evidence of actual harm in 89 (prescribing = 22, administration = 67).’ The authors contend that their ‘harm assessment process provides a systematic method for determining actual harm from medication errors. The multidisciplinary nature of the panels was critical in evaluating specific clinical, therapeutic and contextual considerations including care delivery pathways, therapeutic dose ranges and drug–drug and drug–disease interactions.’

For information on the Commission’s work on medication safety see
<https://www.safetyandquality.gov.au/our-work/medication-safety>

Journal for Healthcare Quality

Volume 46, Number 5, September/October 2024

URL	https://journals.lww.com/jhqonline/toc/2024/10000
Notes	A new issue of the <i>Journal for Healthcare Quality</i> (JHQ) has been published Articles in this issue of the <i>Journal for Healthcare Quality</i> include: <ul style="list-style-type: none"> • Fall Risk Screening in Older Adult Patients on Chronic Opioid Therapy: A Quality Improvement Project (Johanna Greenberg, Andrew Curtin, Eliza Taylor, Katherine Fortenberry)

	<ul style="list-style-type: none"> • Impact of Collaborative Leadership, Workplace Social Capital, and Interprofessional Collaboration Practice on Patient Safety Climate (Ryohei Kida, Katsumi Fujitani, Hironobu Matsushita) • Optimizing the Team Approach: Designing a Clinical Care Pathway for Functional Neurological Disorder (Laurey Brown, Meredith Norwood, Laurie G Thompson) • Characterization of Emergency Department Quality Assurance Cases Seen Within a Midwestern United States Health System (Karli Smith, Hayden L Smith, Alex Wittry, Gabriel Conley, Jodi Leech, Nicholas Kluesner) • Improving Lung Cancer Screening at an Academic Medical Center (Cynthia Cantu, Rebecca Jones, Dolores Garcia, Arlene Reyes, Ramon S Cancino) • A Survey for Charting Intake, Output, and Body Weight in the Electronic Medical Record (Jianling Tao, Sara May, Mingyi Li, Marianne Monahan, Donna Phanumas, Charles Seelig) • Eradicating the Loneliness Epidemic: One Phone Call at a Time (Ethan Feldmiller, Lynnae Messner, Sridhar Rao Gona, Maulik Joshi) • Challenges Meeting 21st Century Cures Act Patient Identity Interoperability and Information Blocking Rules (George A Gellert, Mark E Erwich, Sara Krivicky Herdman) • Factors Associated With Nasogastric Tube Placement-Related Complications in a Single Academic Medical Center (Whitney Pickel, Elizabeth Talbott, Justine Abram, Richard Bernardi, DaWanda Forester, Joshua Hawkins, Jennifer Henry, Danielle Nesbitt, Candice Smith, Keith Gray)
--	--

Health Expectations

Volume 27, Issue 4, August 2024

URL	https://onlinelibrary.wiley.com/toc/13697625/2024/27/4
Notes	<p>A new issue of <i>Health Expectations</i> has been published. Articles in this issue of <i>Health Expectations</i> include:</p> <ul style="list-style-type: none"> • Reflections on the opportunities and challenges of applying experience-based co-design (EBCD) to phase 1 clinical trials in oncology (Nils Graber, Nina Canova, Denise Bryant-Lukosius, Glenn Robert, Blanca Navarro-Rodrigo, Lionel Trueb, George Coukos, M Eicher, T Corbière, S Colomer-Lahiguera) • Toward a Medication Information Literacy Indicator System for Older Adults: A Delphi Study (Xiaoyu Zhou, Jia Yi, Li Bai, Mengyao Jiang, Wei Peng, Jing Liao, Hang Wang, Xiaorong Hou) • Examining identity disclosure: Racial and ethnic identity amongst Multiracial/ethnic adults in the United States (Jaimie Shaff, Janel Cubbage, Sachini Bandara, Holly C Wilcox) • Epidermolysis Bullosa in Spain: A Qualitative Analysis of Its Social Impact on Families With Diagnosed Minors (Juan Manuel Martínez-Ripoll, Marta García-Domingo, Yolanda María de la Fuente Robles) • Perceptions of the Impact of Comorbidity on the Bowel Cancer Screening Programme: Qualitative Study With Bowel Screening Participants and Staff (Delyth Price, Katherine Brain, Sunil Dolwani, A Edwards, K Hood, S Smits) • Experiences of Self-Sampling and Future Screening Preferences in Non-Attendees Who Returned an HPV Vaginal Self-Sample in the YouScreen Study: Findings From a Cross-Sectional Questionnaire (Hannah Drysdale, Laura A V Marlow, Anita Lim, Jo Waller)

- Consultations With Muslims From Minoritised Ethnic Communities Living in Deprived Areas: Identifying **Inequities in Mental Health** Care and Support (Ashraf Tannerah, Oluwalolami Hazel, Sheree Desson, Rahima Farah, Zalihe Kamil-Thomas, Halima Iqbal, Catrin Eames, Pooja Saini, Oladayo Bifarin)
- The Development of **Principles for Patient and Public Involvement (PPI)** in Preclinical Spinal Cord Research: A Modified Delphi Study (Pádraig Carroll, Éimear Smith, Adrian Dervan, Ciarán McCarthy, Ian Woods, Cliff Beirne, Geoff Harte, Dónal O'Flynn, John Quinlan, F J O'Brien, M Flood, F Moriarty)
- Partnered Recruitment: Engaging Individuals With Lived Experience in the **Recruitment of Co-Design Participants** (Carly Whitmore, Linxi Mytkolli, Natalie Mangialardi, Jasmine Maghera, Adam Rudick, Kitty Shephard, Stephanie Zazzera, Anika Saiva, Tracy McQuire, P Senior, D Sherifali, P Selby)
- Young Spouses' Experiences of **Having a Partner With Heart Disease and Adolescents** Living at Home (Matilda Holmbom, Frida Andréasson, Hanna Grundström, Camilla Bernild, Nina Fålund, Tone Merete Norekvål, Selina Kikkenborg Berg, Anna Strömberg)
- 'It's Just Not Working', a Qualitative Exploration of the Weight-Related Healthcare Experiences of **Individuals of Arab Heritage With Higher Weight** in Australia (Amira Hassan, Deborah A Kerr, Andrea Begley)
- Youth Perspectives on 'Highly Personalised and Measurement-Based Care': **Qualitative Co-Design of Education Materials** (Sarah McKenna, Alexis Hutcheon, Carla Gorban, Yun Song, Elizabeth Scott, Ian Hickie)
- Development and Evaluation of a Framework for Authentic Online Co-Design: **Partnership-Focussed Principles-Driven Online Co-Design** (Free Coulston, Alicia Spittle, Cassie McDonald, Rachel Toovey, Kate L Cameron, K Attard, L Binstock, I Fletcher, A Delaney, T Murphy, C Keating, K Sellick)
- Doctors', Patients' and Physician Associates' Perceptions of the **Physician Associate Role in the Emergency Department** (Nicole M A King, Suzannah Helps, Yee Gan Ong, Sandra Walker)
- A Qualitative Study of National Perspectives on Advancing **Social Prescribing** Using Co-Design in Canada (Marianne Saragosa, Kate Mulligan, Sonia Hsiung, Srijia Biswas, Kiffer Card, P C Hébert, V Welch, M L A Nelson)
- Patient-Led Research to Develop a Training Programme for Restoring Musical Joy in **Cochlear Implant Recipients**: A Reflexive Process Evaluation (Marjo J M Maas, Joke Veltman, Philip J van der Wees, Cilia Beijck, Wendy J Huinck, Adinda Y M Groenhuis, Huib Versnel, Gertjan Schuiling, Alex E Hoetink)
- Ten Priorities for Research Addressing the Intersections of **Brain Injury, Mental Health and Addictions**: A Stakeholder-Driven Priority-Setting Study (Cole J Kennedy, Erica Woodin, Julia Schmidt, Janelle Breese Biagioni, Mauricio A Garcia-Barrera)
- Public Perceptions of the **Australian Health System During COVID-19**: Findings From a 2021 Survey Compared to Four Previous Surveys (Louise A Ellis, Genevieve Dammery, James Gillespie, James Ansell, Leanne Wells, Carolyn L Smith, Shalini Wijekulasuriya, J Braithwaite, Y Zurynski)
- A Qualitative Exploration of Stroke Survivors' Experiences of Using a **Stroke Helpline** (Muneeba T Chaudhry, Alana B McCambridge, Esminio I I Rivera, Scott William, Peter Stubbs, Arianne Verhagen, Caleb Ferguson)
- Patient Perspectives on a Patient-Facing Tool for **Lung Cancer Screening** (Victoria L Tiase, Grace Richards, Teresa Taft, Leticia Stevens, Christian

Balbin, Kimberly A Kaphingst, Angela Fagerlin, Tanner Caverly, Polina Kukhareva, Michael Flynn, Jorie M Butler, Kensaku Kawamoto)

- Professionals' Perceptions of the **Colorectal Cancer Pathway**: Results of a Co-Constructed Qualitative Study (Matthieu Delaye, A Polomeni, S Faiderbe, N Berlioz, C Bensekoun, A Guillemin, T Pudlarz, S de Montgolfier)
- Exploring Whether and How **People Experiencing High Deprivation Access Diagnostic Services**: A Qualitative Systematic Review (Christine Vincent, Lee-Ann Fenge, Sam Porter, Sharon Holland)
- 'There's Nothing Wrong With You; You Just Need to Lose Weight'—A Qualitative Exploration of Pelvic Floor Dysfunction Among **Women With Multiple Sclerosis** and Their Interaction in Seeking Pelvic Healthcare (Christine Addington, Andy Bradshaw, Suzanne Hagen, Doreen McClurg)
- **Engaging With Health Consumers** in Scientific Conferences—As Partners not Bystanders (Bronwyn Newman, Janelle Bowden, Rebecca Jessup, Lauren J Christie, Ann Livingstone, Mitchell Sarkies, Anagha Killedar, Carole Vleeskens, Mashreka Sarwar, Thit Tieu, S Chamberlain, R Harrison, A Pearce)
- Evaluation of **Public Involvement in Doctoral Research** Using a Four-Dimensional Theoretical Framework (Piotr Teodorowski, N Tahir, S Ahmed)
- Understanding the Preferences and Considerations of the Public Towards **Risk-Stratified Screening for Colorectal Cancer**: Insights From Think-Aloud Interviews Based on a Discrete Choice Experiment (Rebecca A Dennison, Reanna J Clune, Stephen Morris, Chloe Thomas, J A Usher-Smith)
- Listening to the **Voices of Aboriginal and Torres Strait Islander Women** in Regional and Remote Australia About Traumatic Brain Injury From Family Violence: A Qualitative Study (Elaine Wills, Michelle Fitts)
- Development of Fewer Falls in MS—An Online, Theory-Based, Fall Prevention Self-Management Programme for People With **Multiple Sclerosis** (Susanna Tuvemo Johnson, Charlotte Ytterberg, Elizabeth Peterson, Sverker Johansson, Marie Kierkegaard, Kristina Gottberg, Maria Flink)
- Central and Eastern European Migrants in the United Kingdom: A Scoping Review of the Reasons for **Utilisation of Transnational Healthcare** (Victoria Stepanova, Aaron Poppleton, Ruth Ponsford)
- Equitable Care for **Children With a Tracheostomy**: Addressing Challenges and Seeking Systemic Solutions (Jules Sherman, Habib Zalzal, Kyle Bower)
- Implementation Strategies for Quality Improvement in Palliative Care: A Scoping Review (Yunyun Dai, Barbara A Daveson, Luyu Gan, Jinfeng Ding, Yongyi Chen, Claire E Johnson)
- 'The Norm Is to Not Openly Collaborate': Using the Lens of Co-Production to Evaluate the Development of a **COVID-19 ICU Triage Policy** (Brett Scholz, Flick Grey, Joyce Graham, Imogen Mitchell, Lucy Kirk, Terri Warner)
- Ecologising Invited and Uninvited **Patient Participation in Russia** (Vlas Nikulkin, Yan Vlasov, Olga Zvonareva)
- 'None of Them Know Me': A Qualitative Study of the Implications of **Locum Doctor Working for Patient Experience** (Jane Ferguson, G Stringer, K Walshe, A Donnelly, C Grigoroglou, T Allen, E Kontopantelis, D M Ashcroft)
- All Good Without Anything Good. Beyond Survival: Understanding the Psychosocial Experiences of Individuals With **Chronic Kidney Disease** and Their Caregivers in Sri Lanka (Darshika T Bulathwatta, A Rudnik, M Bidzan)
- Culturally Sensitive **Perinatal Mental Health Care**: Experiences of Women From Minority Ethnic Groups (Angelene Gardner, Sheri Oduola, B Teague)

- The Bidirectional Engagement and Equity (BEE) Research Framework to Guide **Community–Academic Partnerships**: Developed From a Narrative Review and Diverse Stakeholder Perspectives (Jennifer Cunningham-Erves, Tilicia Mayo-Gamble, LaNese Campbell, Bishop Calvin Barlow, Claudia Barajas, Jessica L Jones, Karen Winkfield)
- Patient Characteristics Associated With Disparities in Engagement With and Experience of **COVID-19 Remote Home Monitoring Services**: A Mixed-Methods Evaluation (Nadia E Crellin, Lauren Herlitz, Manbinder S Sidhu, Jo Ellins, Theo Georghiou, Ian Litchfield, Efthalia Massou, Pei Li Ng, Chris Sherlaw-Johnson, Sonila M Tomini, C Vindrola-Padros, H Walton, N J Fulop)
- Developing a Consensus Statement to Target **Oral Health Inequalities in People With Severe Mental Illness** (Masuma Pervin Mishu, Vishal Aggarwal, David Shiers, Emily Peckham, G Johnston, E Joury, C A Chew-Graham, K Goodall, E Elliott, P French, R Harris, L Lavery, J Palmier-Claus)
- Factors Influencing **Kidney Transplantation Experiences** for Patients From Culturally and Linguistically Diverse Backgrounds: A Qualitative Study (Kimberley Crawford, Catherine Wilson, William R Mulley, Nigel D Toussaint, Elaine Kennedy, Narissa Andrew, Andrea Ward, Mandy Truong)
- Witness to Harm; Holding to Account: What Is the Importance of Information for Members of the **Public Who Give Evidence and May Be Witness in a Regulatory Hearing** of a Health or Care Professional? (Gemma Ryan-Blackwell, Louise M Wallace)
- ‘A Meaningful Difference, but Not Ultimately the Difference I Would Want’: A Mixed-Methods Approach to Explore and Benchmark Clinically Meaningful Changes in **Aphasia Recovery** (Sally Zingelman, Dominique A Cadilhac, Joosup Kim, Marissa Stone, Sam Harvey, Carolyn Unsworth, Robyn O'Halloran, Deborah Hersh, Kathryn Mainstone, Sarah J Wallace)
- Participatory Design in **Suicide Prevention**: A Qualitative Study of International Students' Experiences of Adapting the LivingWorks safeTALK Programme (Samuel McKay, Christina Ng, Bridget Kenny, Rafi Armanto, Michelle Lamblin, Jo Robinson)
- The All Together Group: Co-Designing a Toolkit of Approaches and Resources for **End-of-Life Care Planning** With People With Intellectual Disabilities in Social Care Settings (Andrea Bruun, Amanda Cresswell, David Jeffrey, Leon Jordan, Richard Keagan-Bull, Jo Giles, Sarah Swindells, Meg Wilding, Nicola Payne, Sarah L Gibson, R Anderson-Kittow, I Tuffrey-Wijne)
- The Co-Production, Pilot and Qualitative Evaluation of a **Cancer Prevention Programme** With High-Risk Women Delivered on Group Walks by Cancer Champions: Shoulder to Shoulder, Walk and Talk (S Hanson, W Hardeman)
- ‘If It Was Easy Somebody Would Have Fixed It’: An Exploration of Loneliness and Social Isolation Amongst **People Who Frequently Call Ambulance Services** (Lisa Moseley, Jason Scott, Gayle Fidler, Gina Agarwal, Cathy Clarke, J Hammond-Williams, C Ingram, A McDonnell, T Collins)
- Co-Design Workshops to Develop a Psychosocial Support Service Model for Refugees in Sweden Affected by **Gender-Based Violence** (Anna Pérez-Aronsson, Elin Inge, Heba Alanbari, Iman Alsalamah, Miras Ghannoum, Zozan Abu Mohammad, Frida Johansson Metso, Frida Holmqvist, Johanna Belachew, Tove Filén, Frida Pålsson Hennoks, Anna Sarkadi, G Warner)
- A New Process Model for **Relationship-Centred Shared Decision-Making** in Physical Medicine and Rehabilitation Settings (Christina Papadimitriou,

	<p>Marla L. Clayman, Trudy Mallinson, Jennifer A. Weaver, Ann Guernon, Albert J. Meehan, Trisha Kot, Paige Ford, Roger Ideishi, C Prather, P van der Wees)</p> <ul style="list-style-type: none"> • The Mediating Role of Students' Health Information Literacy Skills: Exploring the Relationship Between Web Resource Utilization and Health Information Evaluation Proficiency (Umme Habiba, Foujia Sultana Koli) • Professionals' and Intercultural Mediators' Perspectives on Communication With Ukrainian Refugees in the Czech Healthcare System (Jolana Kopsa Těšínová, Karolína Dobiášová, Marie Jelínková, Elena Tulupova, M Koščík) • Patient and Staff Insights on Digital Care Pathways for Patients With Low Back Pain in the Emergency Department: A Qualitative Study (Emily C Bell, Hazel Heng, Nicole Alousis, Matthew G King, Andrew Hahne, Thomas Collins, Katharine See, Tracey Webster, E O'Dowd, P Jackson, A I Semciw) • Patients' and Therapists' Views of Integrated Online CBT for Depression (Fiona Fox, Nicola Wiles, David Kessler, Debbie Tallon, Laura Thomas, Christopher Williams, Roz Shafran, Paul Lanham, Katrina Turner) • What Does 'Preconception Health' Mean to People? A Public Consultation on Awareness and Use of Language (Danielle Schoenaker, Olatundun Gafari, Elizabeth Taylor, Jennifer Hall, Caroline Barker, Barney Jones, Nisreen A Alwan, Daniella Watson, Chandni Maria Jacob, Mary Barker, K M Godfrey, E Reason, F Forder, J Stephenson, For the UK Preconception Partnership) • Identifying Facilitators and Inhibitors of Shared Understanding: An Ethnography of Diagnosis Communication in Acute Medical Settings (Caitriona Cox, Thea Hatfield, Janet Willars, Zoë Fritz) • Evaluation of a Faith-Placed Health Education Service on Bowel Cancer Screening in Mosques in East London (Salman Waqar, Dharani Yerrakalva, Thomas E. Duffy, Jake Chambers, Zohra Ali, Paul Thomas, Caroline Cook, Sufia Alam, Leena Khagram, Samantha Quaife, Stephen W Duffy) • Young People Talk About Digital Support for Mental Health: An Online Survey of 15–30-Year Olds in New Zealand (Susan M. Garrett, Jo Hilder, Rachel Tester, Abby Dunlop, Tracey Gardiner, Tony Dowell, Soraya Kamau Brady, Nicole Gilbert, Maggie Shippam, Shay Tanirau, Neo Kenny, Caitlin McBride, Joana Wilson, Ellie Rukuwai, Niusha Aryan, Maria Stubbe) • Public Engagement in Health Policy-Making for Older Adults: A Systematic Search and Scoping Review (Jeonghwa You, Rebecca Ganann, Michael Wilson, Soo Chan Carusone, Maggie MacNeil, Carly Whitmore, Andrea Dafel, Roma Dhamanaskar, Eugenia Ling, Lance Dingman, A Tina Falbo, Michael Kirk, Joyce Luyckx, P Petrie, D Weldon, K Boothe, J Abelson) • Preferences for Peer Support Amongst Families Engaged in Paediatric Screening Programmes: The Perspectives of Parents Involved in Screening for Type 1 Diabetes in Children Aged 3–13 (Ian Litchfield, Lauren M. Quinn, Felicity Boardman, Olga Boiko, Parth Narendran, Shivam Choundhary, Naga Setti, Veer Sheth, Sheila M Greenfield)
--	---

BMJ Quality & Safety online first articles

URL	https://qualitysafety.bmj.com/content/early/recent
Notes	<p><i>BMJ Quality & Safety</i> has published a number of ‘online first’ articles, including:</p> <ul style="list-style-type: none">• Sex, drugs and rock ‘n’ roll: the only reasons for regulators to target individuals (Siri Wiig, Catherine Jane Calderwood, Bent Høie, Jeffrey Braithwaite)• Assessing patient work system factors for medication management during transition of care among older adults: an observational study (Yan Xiao, Yea-Jen Hsu, Susan M Hannum, Ephrem Abebe, Melinda E Kantsiper, Ivonne Marie Pena, Andrea M Wessell, Sydney M Dy, Eric E Howell, Ayse P Gurses)• Strategies for adapting under pressure: an interview study in intensive care units (Bethan Page, Dulcie Irving, Jane Carthey, John Welch, Helen Higham, Charles Vincent)

International Journal for Quality in Health Care online first articles

URL	https://academic.oup.com/intqhc/advance-articles
Notes	<p><i>International Journal for Quality in Health Care</i> has published a number of ‘online first’ articles, including:</p> <ul style="list-style-type: none">• An Invitation to Contribute to a Dynamic Community Committed to Quality Without Borders: The Rise of a Global Francophone Network Focused on Healthcare Improvement (Pierre M Barker, Mathieu Louiset, Philippe Michel, James Mountford, Anthony Staines, Angela Zambeaux, Jennifer Zelmer)• Reporting patient experiences within elective perioperative care: a scoping review (Sharon Mickan, Jenna Fletcher, Rosanne Burrows, Sarah Bateup, Alison Stokes, Jason Tsung)

Online resources

Safeguarding healthcare podcast series

<https://racma.edu.au/resources/clinical-governance-program/safeguarding-healthcare-podcast-series/>

RACMA (the Royal Australasian College of Medical Administrators) has developed this podcast series which aims to enhance the understanding of clinical governance. Each episode engages an expert in a conversation on how they would manage a challenging clinical governance scenario.

Australian Living Evidence Collaboration

<https://livingevidence.org.au/>

[UK] Approaches to Spread and Scale

<https://horizonsnhs.com/spread-approaches/>

NHS Horizons has collated resources around a number of approaches to the challenge of how to spread and scale innovation and improvement. The approaches include

- Building capacity and capability
- Networking, peer learning and collaboration
- Piloting and rolling out
- Coordinating through large scale engagement and national programmes
- Investing and Incentivising
- Governing and Assuring
- Identifying and communicating priorities.

[UK] NICE Guidelines and Quality Standards

<https://www.nice.org.uk/guidance>

The UK's National Institute for Health and Care Excellence (NICE) has published new (or updated) guidelines and quality standards. The latest reviews or updates include:

- NICE Guideline NG243 **Adrenal insufficiency: identification and management**
<https://www.nice.org.uk/guidance/ng243>

[UK] NIHR Evidence

<https://www.evidence.nihr.ac.uk/>

The UK's National Institute for Health Research (NIHR) has posted new evidence alerts on its site. Evidence alerts are short, accessible summaries of health and care research which is funded or supported by NIHR. This is research which could influence practice and each Alert has a message for people commissioning, providing or receiving care. The latest alerts include:

- What help do people with **learning disabilities** need as they get older?
- Easy-read report: What help do people with **learning disabilities** need as they get older?
- Home self-sampling for **cervical cancer** is environmentally friendly
- CT scan reduces the complications of **angiography after bypass surgery**
- Gastrointestinal symptoms may be a sign of **early ovarian cancer in postmenopausal women**
- Hot weather increases the risk of **acute kidney injury**
- Young people with **long COVID** need support when they attempt to go back to school
- How to implement toothbrushing programmes to tackle **tooth decay in children**
- **Children with anxiety problems:** online therapy led by parents, supported by therapists, was effective
- How much does **long COVID** cost individuals, informal carers, and society?

[USA] Effective Health Care Program reports

<https://effectivehealthcare.ahrq.gov/>

The US Agency for Healthcare Research and Quality (AHRQ) has an Effective Health Care (EHC) Program. The EHC has released the following final reports and updates:

- *Pharmacologic and Nonpharmacologic Treatments for **Posttraumatic Stress Disorder**: 2024 Update of the Evidence Base for the PTSD Trials Standardized Data Repository*
<https://effectivehealthcare.ahrq.gov/products/ptsd-pharm-non-pharm-treatment-update/research>

[USA] AHRQ Perspectives on Safety

<https://psnet.ahrq.gov/psnet-collection/perspectives>

The US Agency for Healthcare Research and Quality (AHRQ) publishes occasional Perspectives on Safety essays. Recent essays include:

- *Application of Safety-II Principles* – an overview of Safety-II principles and discusses ways healthcare systems are integrating Safety-II principles into safety programs and care delivery. <https://psnet.ahrq.gov/perspective/application-safety-ii-principles>

COVID-19 resources

<https://www.safetyandquality.gov.au/covid-19>

The Australian Commission on Safety and Quality in Health Care has developed a number of resources to assist healthcare organisations, facilities and clinicians. These and other material on COVID-19 are available at <https://www.safetyandquality.gov.au/covid-19>

These resources include:

- **Poster – Combined contact and droplet precautions**
<https://www.safetyandquality.gov.au/publications-and-resources/resource-library/infection-prevention-and-control-poster-combined-contact-and-droplet-precautions>

STOP VISITOR RESTRICTIONS MAY BE IN PLACE

For all staff
Combined contact & droplet precautions*
in addition to standard precautions

Before entering room/care zone

- 1 Perform hand hygiene
- 2 Put on gown
- 3 Put on surgical mask
- 4 Put on protective eyewear
- 5 Wear gloves, in accordance with standard precautions

At doorway prior to leaving room/care zone

- 1 Remove and dispose of gloves if worn
- 2 Perform hand hygiene
- 3 Remove and dispose of gown
- 4 Perform hand hygiene
- 5 Remove protective eyewear
- 6 Perform hand hygiene
- 7 Remove and dispose of mask
- 8 Leave the room/care zone
- 9 Perform hand hygiene

What else can you do to stop the spread of infections?

- Always change gloves and perform hand hygiene between different care activities and when gloves become soiled to prevent cross contamination of body sites
- Consider patient placement
- Minimise patient movement

*e.g. Acute respiratory tract infection with unknown aetiology, seasonal influenza and respiratory syncytial virus (RSV)
For more detail, refer to the Australian Guidelines for the Prevention and Control of Infection in Healthcare and your state and territory guidance.

AUSTRALIAN COMMISSION
ON SAFETY AND QUALITY IN HEALTH CARE

PPE use images reproduced with permission of the NSW Clinical Excellence Commission.

- *Poster – Combined airborne and contact precautions*
<https://www.safetyandquality.gov.au/publications-and-resources/resource-library/infection-prevention-and-control-poster-combined-airborne-and-contact-precautions>

VISITOR RESTRICTIONS MAY BE IN PLACE

For all staff

Combined airborne & contact precautions

In addition to standard precautions

Before entering room/care zone

- 1

Perform hand hygiene
- 2

Put on gown
- 3

Put on a particulate respirator (e.g. P2/N95) and perform fit check
- 4

Put on protective eyewear
- 5

Wear gloves in accordance with standard precautions

What else can you do to stop the spread of infections?

- Always change gloves and perform hand hygiene between different care activities and when gloves become soiled to prevent cross contamination of body sites
- Consider patient placement
- Minimise patient movement

At doorway prior to leaving room/care zone

- 1

Remove and dispose of gloves if worn
- 2

Perform hand hygiene
- 3

Remove and dispose of gown
- 4

Leave the room/care zone
- 5

Perform hand hygiene (in an anteroom/outside the room/care zone)
- 6

Remove protective eyewear (in an anteroom/outside the room/care zone)
- 7

Perform hand hygiene (in an anteroom/outside the room/care zone)
- 8

Remove and dispose of particulate respirator (in an anteroom/outside the room/care zone)
- 9

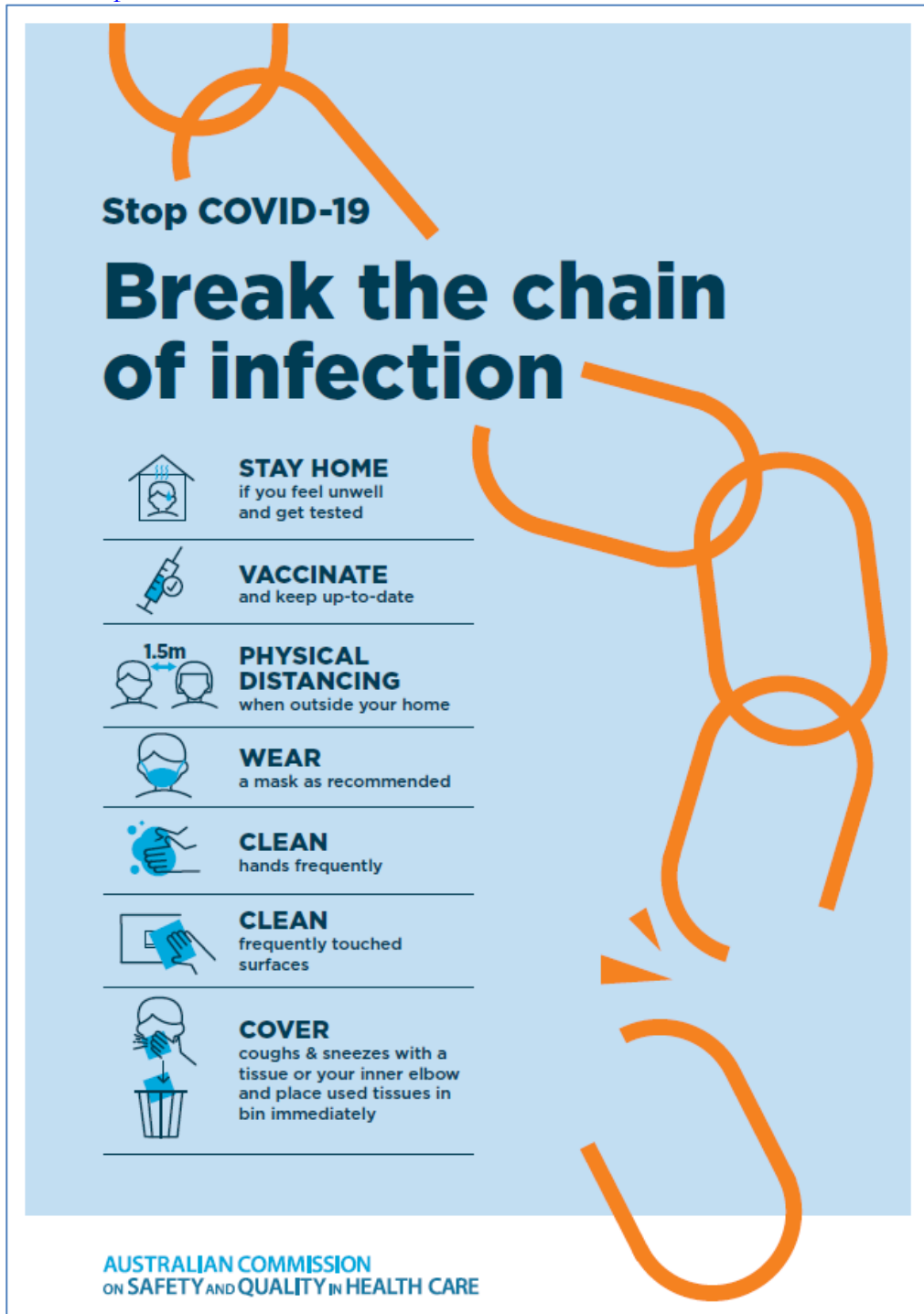
Perform hand hygiene

KEEP DOOR CLOSED AT ALL TIMES

AUSTRALIAN COMMISSION
ON SAFETY AND QUALITY IN HEALTH CARE

PPE use images reproduced with permission of the NSW Clinical Excellence Commission.

- *Environmental Cleaning and Infection Prevention and Control*
www.safetyandquality.gov.au/environmental-cleaning
- *COVID-19 infection prevention and control risk management – Guidance*
<https://www.safetyandquality.gov.au/publications-and-resources/resource-library/covid-19-infection-prevention-and-control-risk-management-guidance>
- *Safe care for people with cognitive impairment during COVID-19*
<https://www.safetyandquality.gov.au/our-work/cognitive-impairment/cognitive-impairment-and-covid-19>
- *Stop COVID-19: Break the chain of infection* poster
<https://www.safetyandquality.gov.au/publications-and-resources/resource-library/break-chain-infection-poster-a3>



- **COVID-19 and face masks – Information for consumers**
<https://www.safetyandquality.gov.au/publications-and-resources/resource-library/covid-19-and-face-masks-information-consumers>

**AUSTRALIAN COMMISSION
ON SAFETY AND QUALITY IN HEALTH CARE**

**INFORMATION
for consumers**

COVID-19 and face masks

Should I use a face mask?

Wearing face masks may protect you from droplets (small drops) when a person with COVID-19 coughs, speaks or sneezes, and you are less than 1.5 metres away from them. Wearing a mask will also help protect others if you are infected with the virus, but do not have symptoms of infection.

Wearing a face mask in Australia is recommended by health experts in areas where community transmission of COVID-19 is high, whenever physical distancing is not possible. Deciding whether to wear a face mask is your personal choice. Some people may feel more comfortable wearing a face mask in the community.


When thinking about whether wearing a face mask is right for you, consider the following:

- Face masks may protect you when it is not possible to maintain the 1.5 metre physical distance from other people e.g. on a crowded bus or train
- Are you older or do you have other medical conditions like heart disease, diabetes or respiratory illness? People in these groups may get more severe illness if they are infected with COVID-19
- Wearing a face mask will reduce the spread of droplets from your coughs and sneezes to others (however, if you have any cold or flu-like symptoms you should stay home)
- A face mask will not provide you with complete protection from COVID-19. You should also do all of the other things listed below to prevent the spread of COVID-19.

What can you do to prevent the spread of COVID-19?

Stopping the spread of COVID-19 is everyone's responsibility. The most important things that you can do to protect yourself and others are to:

- Stay at home when you are unwell, with even mild respiratory symptoms
- Regularly wash your hands with soap and water or use an alcohol-based hand rub
- Do not touch your face
- Do not touch surfaces that may be contaminated with the virus
- Stay at least 1.5 metres away from other people (physical distancing)
- Cover your mouth when you cough by coughing into your elbow, or into a tissue. Throw the tissue away immediately.



Disclaimer

On the Radar is an information resource of the Australian Commission on Safety and Quality in Health Care. The Commission is not responsible for the content of, nor does it endorse, any articles or sites listed. The Commission accepts no liability for the information or advice provided by these external links. Links are provided on the basis that users make their own decisions about the accuracy, currency and reliability of the information contained therein. Any opinions expressed are not necessarily those of the Australian Commission on Safety and Quality in Health Care.