

AUSTRALIAN COMMISSION ON SAFETY AND QUALITY IN HEALTH CARE

National Patient Blood Management Collaborative Snapshot for

THE ALFRED HOSPITAL



TheAlfred

- 46.9% male and 53.1% female
- 1.6% aged under 0-19 years; 37% aged 20-64 years and 61.4% aged over 65 years
- 98.3% non-Indigenous Australians and 1.7% Aboriginal and Torres Strait Islander people

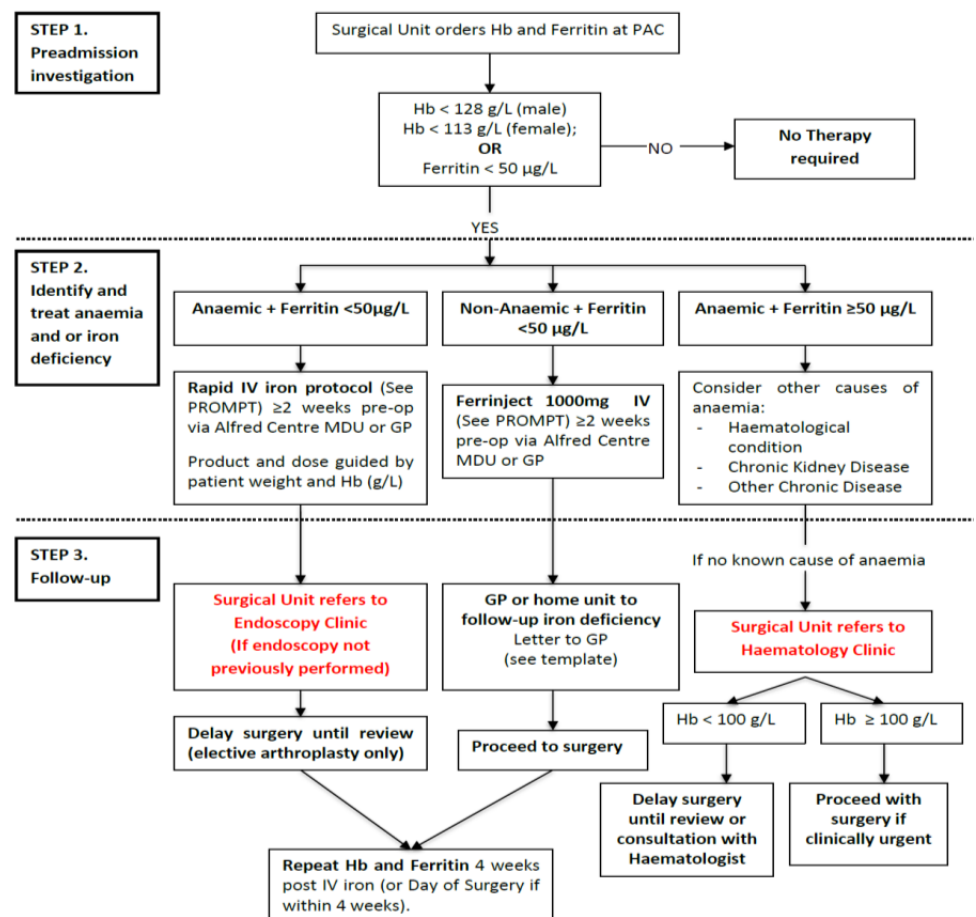
Table 1: Percentage of patients assessed, confirmed and managed for anaemia and iron deficiency, May 2015 to March 2017

Age Range	Gender	ASSESSED		% of assessed who were CONFIRMED		% of confirmed who were MANAGED	
		% with anaemia	% with iron deficiency	% with anaemia	% with iron deficiency	% with anaemia	% with iron deficiency
0-19	Female	1.2%	1.6%	1.7%	1.3%	2.4%	1.9%
0-19	Male	0.5%	0.3%	2.5%	0%	4.8%	0.0%
20-64	Female	18.3%	16.9%	9.9%	15.2%	14.3%	13.5%
20-64	Male	17.8%	19.3%	21.5%	22.8%	23.8%	17.3%
65+	Female	33.9%	35.7%	23.1%	36.7%	19.0%	42.3%
65+	Male	28.3%	26.2%	41.3%	24.1%	35.7%	25.0%

KEY ACHIEVEMENTS

- ★ Reduction in transfusion rate.
- ★ Increased use of single unit transfusions as appropriate.
- ★ Increased use of tranexamic acid intra-operatively, when appropriate.
- ★ Increased testing for iron deficiency.
- ★ Increased management of iron deficiency, usually with IV infusion.
- ★ Management of program within hospital resources already available.
- ★ Continuation of program post Collaborative.

PRE-OPERATIVE HAEMOGLOBIN OPTIMIZATION PRIOR TO MAJOR ELECTIVE SURGERY (ORTHOPAEDIC, UGIS, COLORECTAL)



National Patient
Blood Management
Collaborative